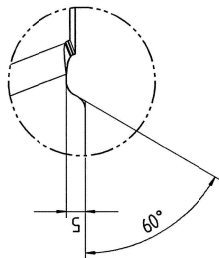
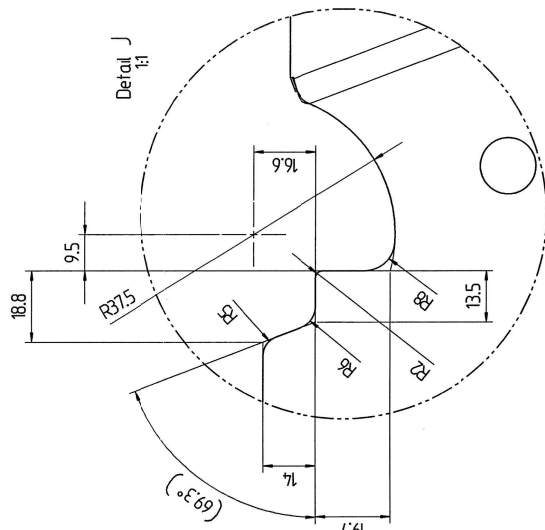


Detail H
1:1



Detail J
1:1



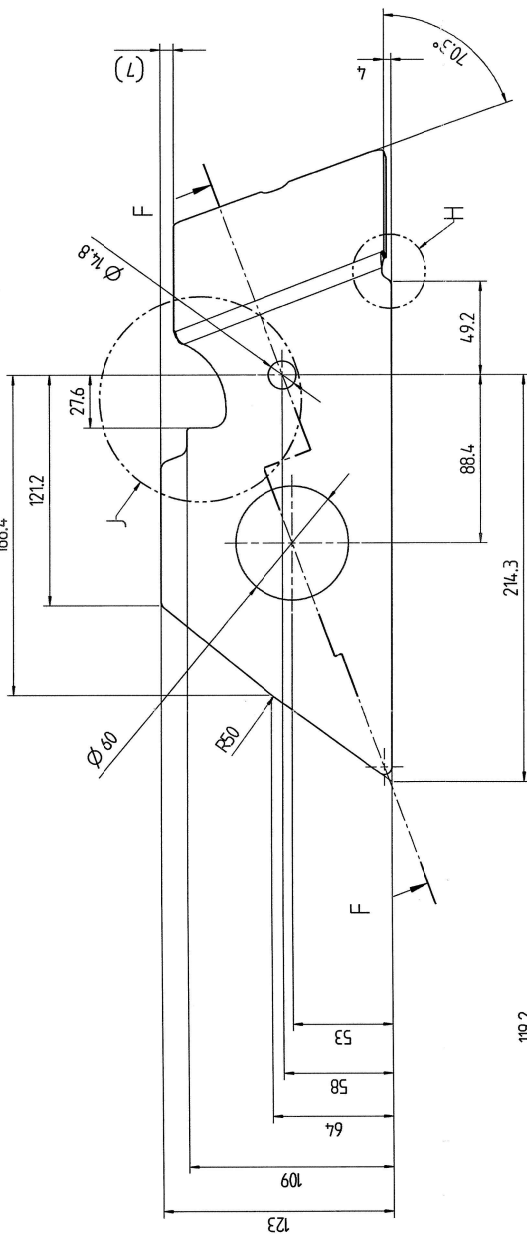
PŘEKLAD
dne: 17. 12. 2014

PROVEDLA
11/04/2014

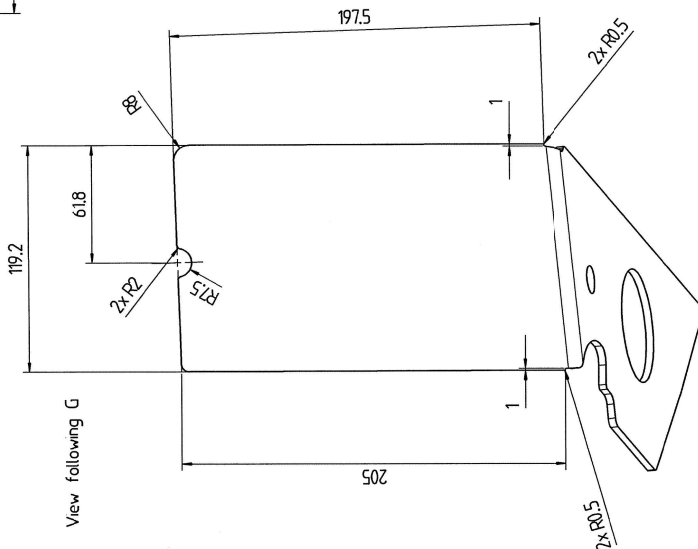
2-03-2015
ARCHIV

N2 14/01402

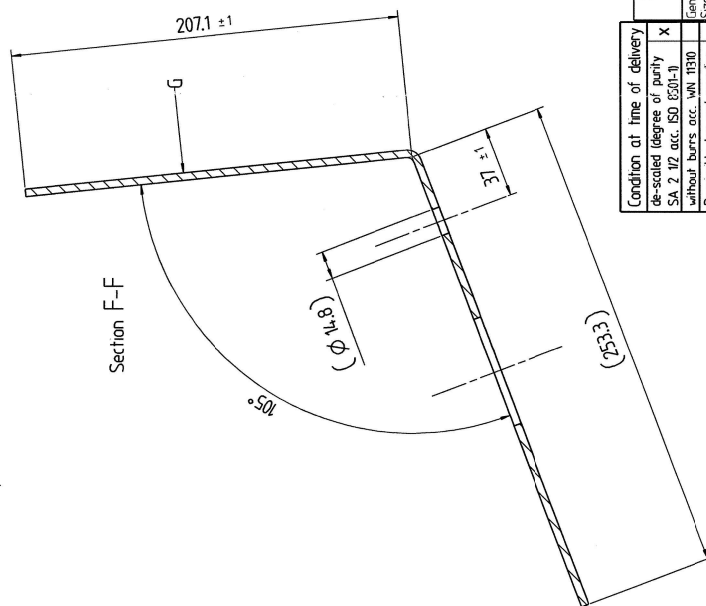
3



View following G



Section F-F



Condition at time of delivery	de-scaled (degree of purity)	SA 2 172 acc. ISO 1501-1
Without burrs acc. WN 1130	X	
Permissible top-end rounding during flame cutting (also positive bead acc. WN 10572)		
at-free / free of grease		
alloy		
alloy permissible		
Indicate the required condition at time of delivery with an X.		

First angle	projection	Index	alteration	Material	Weight	Scale	Sheet	af:
General tolerance (GT) in mm				Material: S235JR according to EN10025-2	Weight: in kg 1.4	Scale: 1:2	Sheet: 1	af: 1
Size range				Blank no:				
GT coarse				Date				
L 1 2 3 4				Drawn				
L 1 2 3 4				Checked				
L 1 2 3 4				Authtd				
L 1 2 3 4				Mccheck				

VL
Tlouster NAT.
NEKOT. RADIOS
RADIOS 01402

NOTA :
- Metal sheet thickness : 4 mm
- Radii without dimension : R = 4
- Bend radii : R = 4